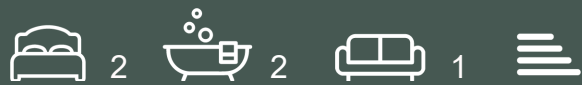




Menara Point - 19th Floor,  
TwelveTrees Park  
£2,650



Available Now | 19th Floor | Unfurnished | Stunning Views | 24/7 Concierge | Gym | Cinema Room | Lounges | Meeting Rooms | Communal Gardens | WeChat: CLH-Consultant.



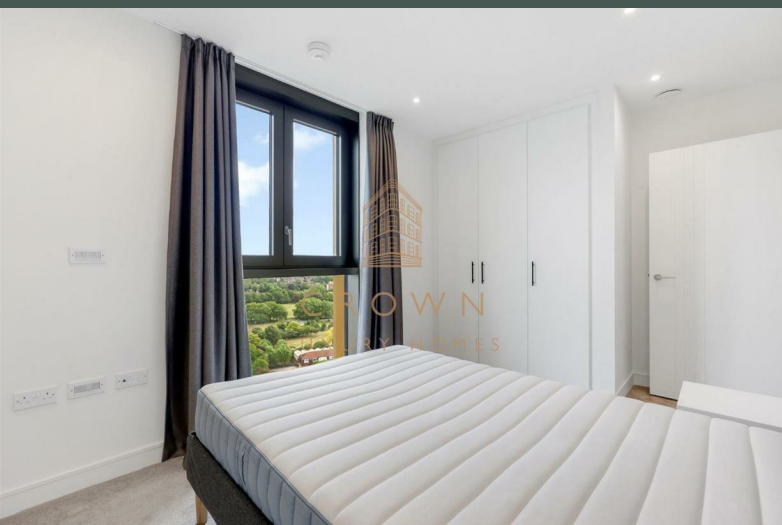
CROWN  
LUXURY HOMES

lettings@crownluxuryhomes.com  
+44 2035 143482



- 19th Floor
- Concierge
- Residents' Gym
- Residents' Lounges
- Residents' Cinema Room

- Brand New
- Residents' Meeting Rooms
  - Communal Gardens
- Close to West Ham Station
  - Available Now



## The Property

Positioned on the 19th floor of the highly sought-after TwelveTrees Park development, this two-bedroom apartment offers a thoughtfully designed layout, premium finishes, and fantastic transport connections — ideal for professionals or sharers looking for contemporary living in East London.

As you enter the apartment, a spacious hallway greets you, setting a calm and welcoming tone. To your left, you'll find a separate WC — perfect for guest use and everyday convenience.

Continue down the hall and you'll arrive at the heart of the home: a bright open-plan living, kitchen, and dining area positioned at the rear of the apartment. This generously proportioned space is filled with natural light thanks to large windows and has been laid out with modern lifestyles in mind — perfect for relaxing or entertaining.

The L-shaped kitchen combines sleek cabinetry, integrated appliances, and clean lines for a stylish yet functional cooking space. Whether you're preparing a quick breakfast or hosting a dinner party, this kitchen delivers both ease and elegance.

The main bedroom includes built-in wardrobes, while both bedrooms benefit from floor-to-ceiling windows, creating light-filled spaces ideal for rest, work, or creativity.

The main bathroom is finished to a high standard, featuring a full-size bathtub with overhead shower, soft lighting, a modern vanity unit, and a mirrored cabinet offering practical storage in a refined setting.

## TwelveTrees Development

Outside your front door, TwelveTrees Park offers more than just a home — it's a lifestyle. Enjoy the convenience of a concierge service, beautifully maintained communal gardens, and a growing range of premium amenities. Residents also benefit from a private gym, residents' lounges, and even a cinema room — elevating your everyday living experience.

Set moments from West Ham Station, the development is perfectly placed for swift access to Canary Wharf, the City, and beyond.

## Additional Information

Heating/Hot Water Provider: Switch2

Council: Newham, Band: C

Holding Deposit: Equivalent to 1 Weeks' Rent

Security Deposit: Equivalent to 5 Weeks' Rent

Local Council: Newham  
Council Tax Band: C

